

Category6 Unshielded Patch Cord

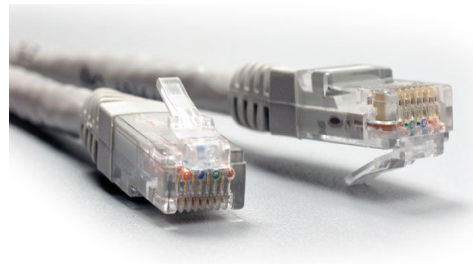
Material

Cable

Conductor: 7 copper wires Ø0.20 mm (0.008"), 24 AWG
Insulation: High Density Polyethylene (HDPE)
Diameter of insulated conductor: 0.98 ± 0.05 mm (0.039" \pm 0.002")
Number of pairs: 4
Color of Twisted Pairs: blue-white/blue, orange-white/orange,
green-white/green, brown-white/brown
Jacket: PVC Ø6, 8 \pm 0, 2 mm

Plug

2 pieces Unshielded RJ-45 8P8C, category 6, for patch cable
Contact: 1.27 micron (50 micro inches) gold plated copper alloy
Molded Boot Material: PVC



Ordering Information

PC06U-**M-01** i-Net Networks Patch Cord Category6 Unshielded Stranded 24AWG 4Pair Milky Gray 1 Feet

M **M**—Milky Gray, **B**—Blue, **L**—Black, **G**—Green, **R**—Red, **Y**—Yellow

01 **01**—1 Ft, **02**—2 Ft, **03**—3 Ft, **06**—6 Ft, **10**—10 Ft, **16**—16 Ft, **32**—32 Ft, **49**—49 Ft, **65**—65 Ft, **98**—98 Ft

